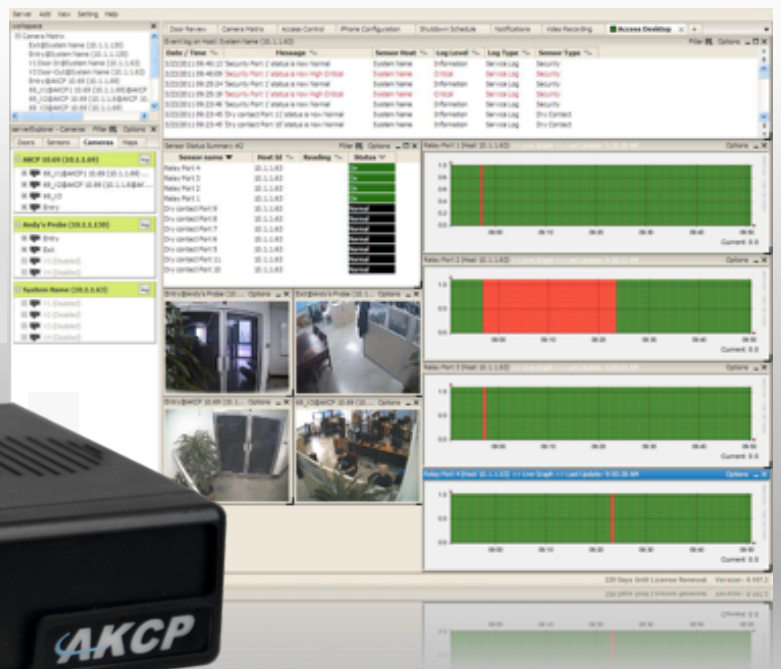


sensorProbe4



sensorProbe4

A high-speed, accurate and intelligent monitoring device. The sensorProbe4 is a completely embedded host with a proprietary Linux like OS which includes TCP/IP stack, a built-in web-server and full Email and SNMP functionality.

Based on years of Industry experience it's ready to run right out of the box, simply assign the IP address and connect to the embedded web server.

Introducing the sensorProbe4

The sensorProbe4 can record all events in its database with a time stamp of when the sensor alarm was raised and the action taken place. A standalone product with no external software dependencies, the sensorProbe4 gives you the very best for your monitoring needs. It has 4 auto-sense intelligent sensor ports which work with a wide range of AKCP intelligent sensors. It can use any combination of sensors to monitor temperature, humidity, water leakage, airflow, security and even control relays.



sensorProbe4 Monitoring System

AKCP sensors can also be used to detect AC voltage and measure DC voltage. Our sensors include an integrated data collection and graphing package to spot trends in the airflow, temperature and humidity.

sensorProbe4 safeguards your infrastructure, resources and investment from external disaster before it happens.

sensorProbe4's Main Features

- Fully embedded TCP/IP and web-server.
- Built-in notification features - Email and SNMP traps.
- 4 auto-sense ports for connecting any AKCP sensors.
- A new improved web-based interface for easy configuration and monitoring.
- Continuous time feature on every sensor port to eliminate false warning alerts.
- Login for User and Administrator for better security.
- Battery backed time of day clock for an accurate system date and time.
- A standalone product without any external hardware and software dependencies.
- Micro code firmware update over the Internet.
- Customized color configuration for displaying alerts.
- Network Management System Integration.

► Temperature/Humidity Sensor



Temperature / Humidity sensors can be plugged into the RJ-45 jacks on the sensorProbe4. The Temperature / Humidity sensor comes with 1 foot of cable. The humidity sensor has its own SNMP OID so that data can be collected over the network and graphed.

► Security Sensors



Security sensor with an ALARM/NORMAL indication in software. Security sensors detect doors and windows being opened or closed. SNMP interface for alarm/normal status. SNMP traps sent when critical.

► Temperature Sensor



Temperature sensors can be plugged into the RJ-45 jacks on the sensorProbe4. Temperature sensors (the remote type TMP00, not fixed one foot) can be extended with standard CAT5e network cable up to 1000 feet.

► Voltage Sensors



Voltage Monitor sensor with an ALARM/NORMAL indication in software. Voltage sensors can detect the presence or the absence of line voltage.

► Water Sensors



The water detector sensor is an advanced microprocessor based design, capable of detecting distilled water. This water detector is designed and manufactured by AKCP.

► ropeWater Sensor



ropeWater sensors can be plugged into the RJ-45 jacks on the sensorProbe4. This sensor will detect the presence of water anywhere along the rope.



▶ 4-20 mA Converter

The 4-20 mA signal converter is used to integrate the sensorProbe4 with a 4-20 mA transmitter. 4-20 mA technology is used to communicate analog signals over long distances where electrical interference is a problem.



▶ AC and DC Relays

PRB00-AC or PRB00-DC sensor controlled relays can be connected to the RJ-45 sensor ports. Tied to another sensor, AC or DC equipment can be automatically controlled by the sensorProbe8.

Industry Certifications & Network Management Systems



AKCP offers NMS Integration for leading network management systems such as:

- AdRem NetCrunch
- IBM Tivoli
- SiteScope
- Quest Software – Big Brother
- Lorient Pro
- Somis WebNM and Denika
- Castle Rock
- Logalot
- WhatsUp Gold
- HP OpenView
- MRTG
- Computer Associates Unicenter TNG

Support and Warranty



- **1 year Limited Warranty, Optional 2 Year Warranty.**
- **Unlimited Lifetime Support.**
- **Free Firmware Updates.**
- **Full, Easy to Follow Documentation.**

Technical Specifications

<p>Dimension</p> <p>Size 8.5" x 5.43" x 1.80" 1U Rack Mount Standard Weight 1.72 pounds</p>	<p>Network Interface</p> <p>Standard 10 Base-T Ethernet RJ-45</p>	<p>Mounting</p> <p>1U Rack mount bracket included</p>
<p>Power Requirements</p> <p>Voltage 7.5 – 9 v Current >= 1.2 Amp</p>	<p>Status Indication</p> <p>LED indication for Power LED for Network Connectivity LED for sensor online and threshold status</p>	<p>Output</p> <p>Configurable Output Signals (0VDC / 5VDC) on any of the 4 RJ-45 Sensor Ports</p>
<p>Inputs</p> <p>4x RJ-45 ports for connecting AKCP sensors</p>	<p>Operating Environment</p> <p>Temp : Min. -35° C - Max. +55° C Humidity : Min. 20% - Max. 80% (Non-Condensing)</p>	<p>Components</p> <p>Manufactured using highly integrated, low power surface mount technology to ensure long term reliability.</p>
<p>Power Over Ethernet</p> <p>SP4 PoE is IEEE 802.3af compliant</p>	<p>Power Consumption</p> <p>Typical 1.12 Watt, 0.13A</p>	