

NETIO 4

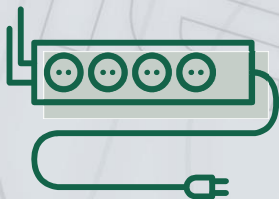
NETIO 4C

NETIO 4All

QIG



QIG (Quick Installation Guide)





Quick Installation Guide (QIG)

Thank you for your purchase of this NETIO product. Before using the device, please read this Quick Installation Guide carefully to avoid problems with incorrect installation or use. For more information, please see the User's Manual available at <http://netio-products.com>.

Please read carefully the following notices.

The NETIO 4 / NETIO 4All / NETIO 4C device operates using electricity. Mishandling may damage the device, void your warranty, or result in injury or death.

Safety Notices

1. The manufacturer is not liable for any damage caused by incorrect use of the device or by operating it in an unsuitable environment.
2. The device is not rated for outdoor use.
3. Do not expose the device to strong vibrations.
4. Unauthorized modifications may damage the device or cause a fire.
5. Protect the device from liquids and excessive temperatures.
6. Make sure the device does not fall.
7. Only approved electrical appliances may be connected to the device.
8. Do not connect multiple devices in series.
9. Cable plug must be easily accessible.
10. The device is completely switched off only when unplugged.
11. If the device malfunctions, disconnect it from the electrical power supply and contact your vendor.
12. If the power cable is damaged, do not use the device. Send the device to an authorized service center for a repair.

Minimum system requirements

A device with an Internet browser (Microsoft Internet Explorer, Opera, Mozilla Firefox, Chrome etc.) that has JavaScript and Cookies support enabled.



NETIO 4C

Package contents

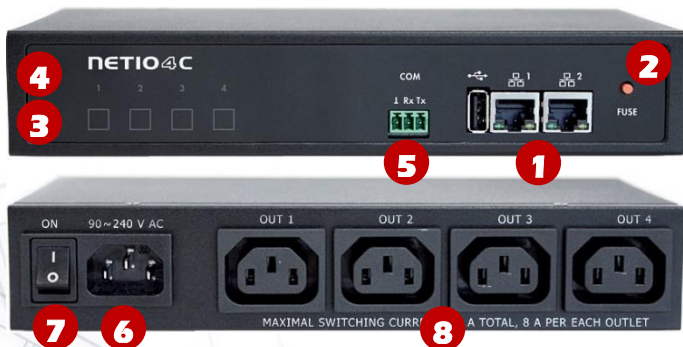
- NETIO 4C device
- Quick Installation Guide
- Europlug power cable (cable type is indicated on the outside of the package)

Front view

- 1) 2x RJ-45 connector for connecting to a computer network (built-in switch).
- 2) Resettable fuse button.
- 3) Buttons for switching outlets on/off manually.
- 4) LED indicators (for individual outlets).
- 5) RS-232 COM interface (terminal block).

Rear view

- 6) Power input inlet IEC-320-C14).
- 7) Main power switch.
- 8) Switched power outlets (IEC-320-C13).





NETIO 4

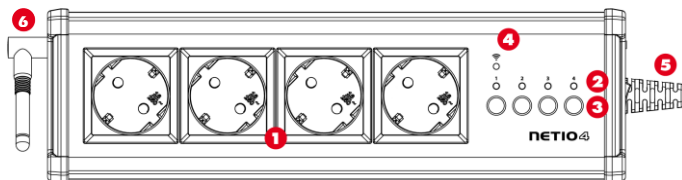
Package contents

- NETIO 4
- Quick Installation Guide
- Wall mount accessories (2x plastic ring for a bolt)

Front view

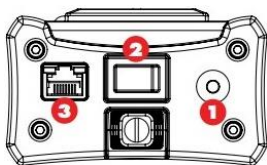
- 1) Switched sockets (type varies according to region).
- 2) LED indicators for individual sockets.
- 3) Buttons for switching sockets on/off manually.
- 4) LED indicator for Wi-Fi.
- 5) Power cable with a plug.
- 6) Fixed 2dBi omnidirectional Wi-Fi antenna.

NETIO 4



Side view

- 1) Resettable fuse button.
- 2) Main power switch.
- 3) RJ-45 connector for connecting to a computer network.





NETIO 4All

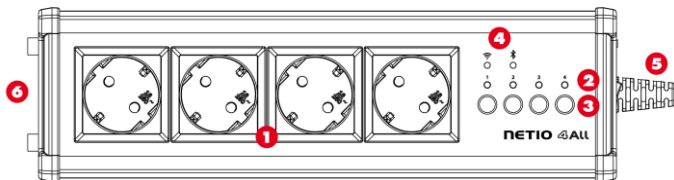
Front view

- 1) Switched & metered sockets (type varies according to region).
- 2) LED indicators.
- 3) Buttons for switching sockets on/off manually.
- 4) LED indicators for Wi-Fi and Bluetooth.
- 5) Power cable with a plug.
- 6) RP-SMA connectors for connecting two supplied antennas.

Package contents

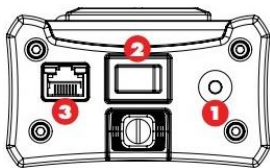
- NETIO 4All
- Quick Installation Guide
- Wall mount accessories (2x plastic ring for a bolt)
- 2x 3dBi omnidirectional antenna with a RP-SMA connector

NETIO 4All



Side view

- 1) Resettable fuse button.
- 2) Main power switch.
- 3) RJ-45 connector for connecting to a computer network.



Note:

Before turning on the device, attach both supplied antennas.



LED indicators, buttons and sound signals

LED indicators [1] to [4]

Device power-up	[1, 2, 3, 4] light up red during device power-up
Standard mode	[1] to [4] off when the output is off [1] to [4] lit green when the output is on [1] to [4] flash green for delayed switch-on
Maintenance mode	[4] lights up red
Reset to factory defaults in progress	[1] to [4] flash red
Firmware upgrade in progress	[3] flashes red, [4] lights up red
"Locate" function	[1] flashes red
DHCP failure	[2] lights up red

LED indicators for Wi-Fi / Bluetooth

Active (connected)	On
Inactive	Off

Buttons

Control of outputs [1] to [4]	To switch the output on or off, press and hold the button for 2 seconds
Enter maintenance mode	When powering up the device, press and hold [4] until the device beeps twice (10s at the most)
Restore factory defaults	When powering up the device, press and hold [1] and [2] until the device beeps twice (it can take up to 20s)

Sound signals

Device power-up	One beep
Restart in maintenance mode	Two beeps
Restoring factory defaults	Three beeps
Restoring factory defaults complete	Two beeps



Before the first use

- 1) Connect the NETIO device to your computer network with a network cable.
- 2) Connect the power cable of the NETIO device to a mains electrical outlet.
- 3) Switch the device on with the rocker switch on the back or on the side.
- 4) Allow about a minute for the device to start up.

First configuration

- 1) For MS Windows, find the **NETIO Discover** utility at our web and install it.
- 2) For other operating systems (Mac, Linux...), a JAVA version of the **NETIO Discover multiplatform** can be used. Latest JAVA version is required.
- 3) If you don't use a DHCP server, the device will be accessible at <http://192.168.1.7/>.
- 4) If your network uses a DHCP server, simply **click the IP address** in any NETIO Discover version and open the web interface.

The screenshot shows the NETIO Discover utility interface. At the top, it displays 'NETIO Discover Version 1.0.11'. On the right, 'Local network settings' are shown: IP: 192.168.12.7, Mask: 255.255.255.0, and a secondary IP: 192.168.12.8, Mask: 255.255.255.0. Below this is a table of discovered devices:

MAC address	Device name	IP Address	IP type	Type	Firmware version
24:A4:2C:33:26:22	myNetio	192.168.12.17	Static	Netio4	2.3.2 (rev.n0f3be7b/2014-07-15@netio4-all)

Red circles highlight the MAC address '24:A4:2C:33:26:22' and the IP address '192.168.12.17'. Red arrows point from these circles to a 'Device configuration' dialog box and the text 'Web browser'. The 'Device configuration' dialog box contains the following fields and options:

- Device name: myNetio (with a 'Show in browser' button)
- IP address: 192 . 168 . 12 . 17
- Subnet mask: 255 . 255 . 255 . 0
- Default gateway: 192 . 168 . 12 . 1
- Enable DHCP
- MAC address: 24:A4:2C:33:26:22
- Firmware version: 2.3.2
- Revision: n0f3be7b/2014-07-15@netio4-all
- An 'Apply settings' button is at the bottom right.

At the bottom left, 'Local adapter IP:' is set to 'All interfaces'.



WEB interface

The default username / password combination is **admin / admin**.

The screenshot shows the NETIO4 WebControl interface in a browser window. The address bar shows the URL `192.168.101.177/#/outlets/1/general`. The page title is "NETIO4 myNetio". The left sidebar contains navigation options: Outlets, M2M Interfaces, Users, Schedules, Actions, Settings, and Log. The main content area displays a list of four outlets, each with a power icon and a refresh icon. The power icon for "output_1" is highlighted with a red circle and an arrow pointing to it. A red text box with the instruction "Click here to set/clear the output" is positioned below the arrow. To the right of the outlet list is a configuration panel for "output_1" with tabs for "General", "Timer", and "Watchdog". The "General" tab is active, showing fields for "Outlet name" (output_1) and "Reset delay" (5 seconds), along with a "Save Changes" button. At the bottom of the interface, there are links for "Support" and "User manual", and the text "Netio Products a.s."



Wi-Fi Access Point

NETIO 4 and NETIO 4All support Wi-Fi 802.11 b/g/n 2.4 GHz (AP mode and Client mode).

Wi-Fi defaults

Network SSID:	Netio4
Security:	WPA2-PSK
Encryption:	AES
Password:	12345678-Netio4
Default IP:	192.168.2.78

NETIO 4 / NETIO 4All is initially configured as a Wi-Fi Access Point so that any PC or other device with a Wi-Fi adapter can connect to it.

The LAN adapter of NETIO 4 and NETIO 4All is active, too.

Support

If you encounter any problems with your device, please consult your supplier. Before you do so, please verify that your product uses the latest firmware version. Also, try restoring factory default settings.

Note:

The manufacturer assumes no responsibility for any technical or printing errors and reserves the right to modify the product or this manual without prior notice. Such changes are announced at the manufacturer's website <http://netio-products.com>.

The manufacturer disclaims all warranties of any kind with respect to the contents of this manual, as well as all implied warranties of merchantability or fitness for a particular purpose.

In particular, the manufacturer disclaims all responsibility for any damages caused by incorrect use of the product, failure to comply with instructions and recommendations in the user manual and/or unprofessional actions of third parties not authorized by the manufacturer to perform warranty service.

January 2017

© 2017 NETIO products a.s. All rights reserved.



Specifications

Power	90-240 VAC; 50/60 Hz; 15 A (10 A for NETIO 4C)
Switched outputs	NETIO 4/4All: 15 [8] A total 8 [8] A per each power socket NETIO 4C: 10 A total / 8 A per outlet
Fuse	Built-in 15 A protection fuse (10 A for NETIO 4C)
Internal consumption	Max 4.1 W
Output relay rating	Micro-disconnection = μ (ohmic load) 1E5 switching cycles Max impulse voltage 1.5 kV,
NETIO 4C interfaces	2x Ethernet RJ-45 10/100 Mbit/s
NETIO 4 interfaces	1x Ethernet RJ-45 10/100 Mbit/s 1x Wi-Fi 802.11b/g/n 2.4 GHz (ext. 2dBi antenna)
NETIO 4All interfaces	1x Ethernet RJ-45 10/100 Mbit/s 1x Wi-Fi 802.11b/g/n 2.4 GHz (3dBi, RSMA) 1x Bluetooth 4.0 LE 2.4 GHz (3dBi, RSMA)
Environment	IP30, Heat and fire resistance class 1 Operating temperature 0 — 50 °C Suitable for pollution level 2 For continuous use at altitudes up to 2000 m Does not require additional cooling

Resettable fuse

The device is equipped with a resettable fuse. In case of output overload or a failure of a connected device, the power is disconnected and the fuse button pops out. After removing the problem (disconnecting the faulty load) and waiting for about 60 seconds, device operation can be restored by pressing the button.

**NETIO**

DECLARATION OF CONFORMITY

Manufacturer/Importer: NETIO products a.s.
Address: U Pily 3/103
143 00 Praha 4, Czech Republic
Product: **NETIO 4 DE, NETIO 4AI DE,**
NETIO 4 FR, NETIO 4AI FR

RTTED:

The product mentioned above to which this declaration relates is in conformity with the essential requirements and other relevant requirements of the R&TTE Directive (1999/5/EC).

The product mentioned above is in conformity with the following standards and/or other normative documents:

EN 55022:10

EN 61000-3-2:06+A1:09+A2:09

EN 61000-3-3:13

EN 55024:10

ETSI EN 301489-1 V1.9.2:2011

ETSI EN 301489-17 V2.2.1:2012

ETSI EN 300 328 v1.8.1

LVD:

The product mentioned above to which this declaration relates is in conformity with the essential requirements and other relevant requirements of the Directive 2006/95/EC.

The product mentioned above is in conformity with the following standards and/or other normative documents:

EN 60950-1:2006+A11:2009+A1:2010+A12:2011+A2:2013

RoHS:

The product mentioned above to which this declaration relates is in conformity with the essential requirements and other relevant requirements of the Directive 2011/65/EU (restriction of the use of certain hazardous substances in electrical and electronic equipment).

The product mentioned above is in conformity with the following standards and/or other normative documents:

EN 50581: 2012

Czech Republic, Prague, November, 16, 2016

Jan Řehák, Chief of the board

**NETIO**

DECLARATION OF CONFORMITY

Manufacturer/Importer: NETIO products a.s.
Address: U Pily 3/103
143 00 Praha 4, Czech Republic
Product: **NETIO 4C**

RTED:

The product mentioned above to which this declaration relates is in conformity with the essential requirements and other relevant requirements of the R&TTE Directive (1999/5/EC).

The product mentioned above is in conformity with the following standards and/or other normative documents:

EN 55011, ed.3:2010
EN 61326-1, ed.2:2013

LVD:

The product mentioned above to which this declaration relates is in conformity with the essential requirements and other relevant requirements of the Directive 2006/95/EC.

The product mentioned above is in conformity with the following standards and/or other normative documents:

EN 61010-1, ed.2:2011

RoHS:

The product mentioned above to which this declaration relates is in conformity with the essential requirements and other relevant requirements of the Directive 2011/65/EU (restriction of the use of certain hazardous substances in electrical and electronic equipment).

The product mentioned above is in conformity with the following standards and/or other normative documents:

EN 50581: 2012

Czech Republic, Prague, November, 16, 2016

Jan Řehák, Chief of the board



Quick connection to the network

NETIO 4 and NETIO 4All with WiFi interface can operate in several modes. The default is “**NETIO Configuration**” mode. To find the device, use the **NETIO Discover** utility for Windows, or the online version at <http://discover.netio-products.com>

The default username and password combination to log in to the web interface is “**admin**” and “**admin**”.

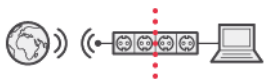
Cable

Connects to a local network using the ethernet cable
Turns the Wi-Fi adapter off



Wi-Fi Client

Connects to a local Wi-Fi network
Uses the ethernet cable as fallback access to Netio
Doesn't bridge Wi-Fi to ethernet



Wi-Fi Access Point

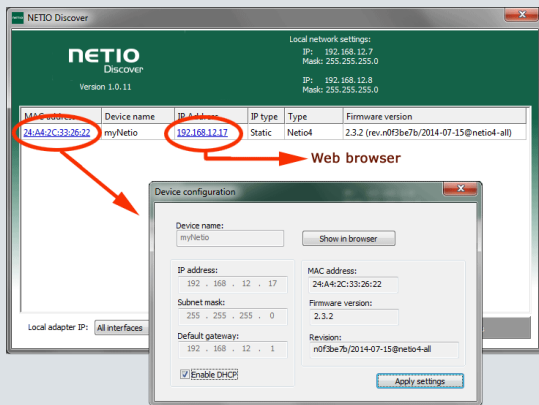
Connects to a local network using the ethernet cable
Bridges ethernet to Wi-Fi



Netio Configuration

Connects to a local network using the ethernet cable
Provides Wi-Fi access point
Doesn't bridge ethernet to Wi-Fi





Download software

NETIO Discover (for MS Windows or JAVA version)

Network mode

Default LAN

Default WiFi

Cable

DHCP
Static 192.168.1.78

-

Wi-Fi Client

Static 192.168.2.78
(separate network)

User-defined

Wi-Fi Access Point

DHCP or Static IP

SSID = Netio4
Key = 12345678-Netio4
Bridge LAN to WiFi

NETIO Configuration
(default)

DHCP - If not found within
60 s, Static IP
192.168.1.78 (separate
network) is used

SSID = Netio4
Key = 12345678-Netio4
DHCP server
NETIO IP = 192.168.2.78

Default Web password

Username: "admin", password: "admin"

Factory defaults

When powering up the device, press and hold the [1] and [2] buttons until the device beeps twice.