



Power Sensor (RMA-PS1-SEN) Installation Note

AVTECH's Power Sensor monitors the on/off state of a power source, such as main power, a UPS, surge protector or standard wall outlet. Simply plug the Power Sensor into the source you wish to monitor. When the power goes out, it sends a signal to Room Alert. Install multiple Power Sensors to generate alerts when one source fails and the back up takes over.



Power Sensor Package Contents

- One (1) Power Sensor ID box
- One (1) 25' speaker cable
- One (1) AVTECH power adapter
- One (1) Installation Note (You're reading it now.)

The Power Sensor ID Box



Install Your Power Sensor



Do not use this sensor in hazardous (classified) locations or life safety applications.

Step 1: Prepare the included 25' speaker cable.

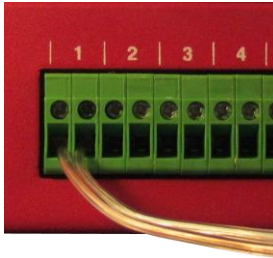
Your Power Sensor comes with one end of the 25' speaker wire already attached to its contacts, which are non-polarized. Separate and strip the leads on the free end of the speaker cable, exposing about ¼" of wire.



Step 2: Mount your Power Sensor.

1. Position your Power Sensor close enough to the power source that the power adapter cord will reach. (Don't connect power yet—you'll do that in a later step.)
2. Mount your power sensor with screws through the flange holes, secure it with Velcro or simply place it on a flat surface.

Step 3: Connect your Power Sensor to Room Alert.



1. Run the speaker cable from the Power Sensor back to your Room Alert monitor or Wireless Sensor Hub.
2. Connect the free ends of the speaker cable to an open switch sensor port on your Room Alert monitor or Wireless Sensor Hub. Again, the Power Sensor's contacts are non-polarized, so you may connect either lead to either side of the open port.



Do not connect the dry contacts on AVTECH products or other electrical appliances to live circuits.

Use only low-voltage 2-wire cable to connect dry contacts.

Step 4: Connect your Power Sensor to the power source you wish to monitor.

1. Connect the power adapter to the power port on the Power Sensor.
2. Insert the power adapter plug into the power supply you wish to monitor. Notice that the sensor's LED lights up when your power source is on.



Use only AVTECH's 5V International Power Adapter. Others could damage the sensor.

Configure Your Power Sensor

Using Room Alert's Web Interface

Navigate to **Settings** → **Sensors** in your Room Alert web interface. The options you see below will vary depending on your Room Alert model.

Room Alert TM Advanced Computer Room
Environment Monitoring, Alerting
& Automatic Corrective Action

Status	Settings	Help	About																		
MAC Address: XX-XX-XX-XX-XX-XX	Version: X.X.X																				
<ul style="list-style-type: none"> Network SMTP Email SNMP <li style="border: 2px solid red; padding: 2px;">Sensors Alarm Options WiSH Sensors WiSH Options Security Advanced 	Switch Sensor Settings																				
	<table border="1" style="width: 100%; border-collapse: collapse;"> <tr> <td style="width: 25%;">Sensor 1 Label Switch Sen 1</td> <td style="width: 15%;">Alarm On Open</td> <td style="width: 15%;">Alarm Profile No Alarm</td> <td style="width: 25%;">Sensor 9 Label Switch Sen 9</td> <td style="width: 15%;">Alarm On Closed</td> <td style="width: 15%;">Alarm Profile No Alarm</td> </tr> <tr> <td>Sensor 2 Label Switch Sen 2</td> <td>Alarm On Closed Disabled Closed</td> <td>Alarm Profile No Alarm</td> <td>Sensor 10 Label Switch Sen 10</td> <td>Alarm On Closed</td> <td>Alarm Profile No Alarm</td> </tr> <tr> <td>Sensor 3 Label</td> <td>Alarm On</td> <td>Alarm Profile</td> <td>Sensor 11 Label</td> <td>Alarm On</td> <td>Alarm Profile</td> </tr> </table>	Sensor 1 Label Switch Sen 1	Alarm On Open	Alarm Profile No Alarm	Sensor 9 Label Switch Sen 9	Alarm On Closed	Alarm Profile No Alarm	Sensor 2 Label Switch Sen 2	Alarm On Closed Disabled Closed	Alarm Profile No Alarm	Sensor 10 Label Switch Sen 10	Alarm On Closed	Alarm Profile No Alarm	Sensor 3 Label	Alarm On	Alarm Profile	Sensor 11 Label	Alarm On	Alarm Profile		
Sensor 1 Label Switch Sen 1	Alarm On Open	Alarm Profile No Alarm	Sensor 9 Label Switch Sen 9	Alarm On Closed	Alarm Profile No Alarm																
Sensor 2 Label Switch Sen 2	Alarm On Closed Disabled Closed	Alarm Profile No Alarm	Sensor 10 Label Switch Sen 10	Alarm On Closed	Alarm Profile No Alarm																
Sensor 3 Label	Alarm On	Alarm Profile	Sensor 11 Label	Alarm On	Alarm Profile																

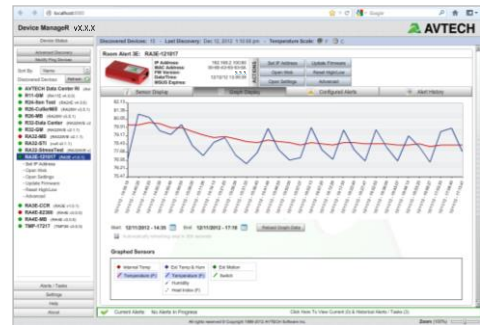
Power Sensor (RMA-PS1-SEN)

1. Scroll down to “Switch Sensor Settings.”
2. Find the sensor label that matches the port you connected your Power Sensor to. For example, if you used the first switch sensor port on your Switch Sensor, look for “Sensor 1 Label”; if you used the second, look for “Sensor 2 Label,” and so on.
3. In “Sensor X Label,” you may leave the default, “Switch Sen X” or enter something more descriptive, such as “Power Server 9” or “Outlet 4 Power.”
4. In “Alarm On,” choose “Open” if you want alerts sent when power is interrupted; choose “Closed” if you want alerts sent when power is flowing.
5. For models with the “Use Alarm Profile” feature: if you have configured Alarm Profiles in the Alarm Options screen, you may choose a profile from the drop-down menu. The default is “Profile 1.”
6. Click **Accept Changes** at the bottom of your screen to temporarily save your settings. You may now navigate to another screen; however, if you close the web interface before the next step, you will lose your changes.
7. Click **Save Settings** in the navigation bar to the left of your screen. Your Room Alert will automatically reboot and commit your changes.

Using AVTECH’s Device Manager Software

For advanced functionality, configure your sensor with AVTECH’s Device Manager, the software that comes FREE with the purchase of any Room Alert monitor.

You may download the latest version from your GoToMyDevices.com account while your subscription for extended service and support is active.



Power Sensor Features & Specifications

Environment Condition Monitored	Power
Type Of Sensor	Switch
Normal State	Closed (Power ON)
Power Supply	AVTECH International Power Adapter
Sensor Cable Type	Low-voltage two-wire speaker cable
Included	Yes
Length	25'
Maximum Extendible Length	900'
Maximum Load	200 VDC, 0.5 A
Operating Temperature	-40° F to 221° F (-40° C to 105° C)
Compatible Products	Any Room Alert model or Wireless Sensor Hub

AVT-150701.02