



Smoke Sensor w/Escape Light (RMA-SS1-SEN) Installation Note

AVTECH's Smoke Sensor w/Escape Light is a battery-powered smoke detector with additional electronics that allow it to interface with Room Alert as a switch sensor; you may set up and receive alerts remotely when the switch state changes to assist your IT staff in monitoring and protecting your valuable IT equipment.



Smoke Sensor Package Contents

- One (1) Smoke Sensor
- One (1) 25' speaker cable
- One (1) 9V alkaline battery
- Two (2) mounting screws with two (2) plastic screw anchors
- One (1) Installation Note (You're reading it now.)
- One (1) User's Manual (attached to this Installation Note)

Install Your Smoke Sensor



Do not use this sensor in hazardous (classified) locations.
Do not use this sensor as a substitute for a complete fire detection system.

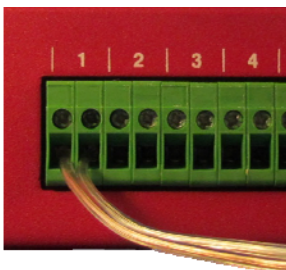
Step 1: Follow the instructions in the attached User's Manual.

Please read the attached User's Manual to for instructions on testing, locating, installing and maintaining your smoke alarm.

Step 2: Prepare the included 25' speaker cable.

Your sensor comes with one end of the 25' speaker wire already attached. Separate and strip the leads on the free end of the speaker cable, exposing about 1/4" of wire. The leads are non-polarized.

Step 3: Connect your Smoke Sensor to Room Alert.



1. Run the speaker cable from the sensor back to your Room Alert monitor.
2. Connect the free ends of the speaker cable to an open switch sensor port on your Room Alert. Again, the leads are non-polarized, so you may connect either lead to either of the port's contacts.



Do not connect the dry contacts on AVTECH products or other electrical appliances to live circuits.
Use only low-voltage 2-wire cable to connect dry contacts.

Configure Your Smoke Sensor w/Escape Light

With Room Alert's Built-In Web Interface

Navigate to **Settings** → **Alarm Options** in your Room Alert web interface. The options you see below will vary depending on the model.

Sensor 1 Label			Alarm On	Alarm Profile	Sensor 9 Label			Alarm On	Alarm Profile
Switch Sen 1			Closed	No Alarm	Switch Sen 9			Closed	No Alarm
Sensor 2 Label			Open	Alarm Profile	Sensor 10 Label			Alarm On	Alarm Profile
Switch Sen 2			Closed	No Alarm	Switch Sen 10			Closed	No Alarm
Sensor 3 Label			Disabled	Alarm Profile	Sensor 11 Label			Alarm On	Alarm Profile
Switch Sen 3			Closed	No Alarm	Switch Sen 11			Closed	No Alarm
Sensor 4 Label			Closed	Alarm Profile	Sensor 12 Label			Alarm On	Alarm Profile
Switch Sen 4			Closed	No Alarm	Switch Sen 12			Closed	No Alarm

1. Scroll down to “Switch Sensor Settings.”
2. Find the switch sensor label that matches the port you connected your sensor to. For example, if you used the first switch sensor port on your Room Alert, look for “Sensor 1 Label”; if you used the second, look for “Sensor 2 Label,” and so on.
3. In “Sensor X Label,” you may leave the default name or enter something more descriptive, such as “Server 8 Smoke” or “Smoke Rm 2.”
4. In “Alarm On,” choose “Closed,” which means the smoke alarm has been triggered. The default state is “Open,” which means the smoke alarm has NOT been triggered.
5. For models with the “Use Alarm Profile” feature: if you have configured Alarm Profiles in the Alarm Options screen, you may choose a profile from the drop-down menu. Otherwise, you may leave the default, “No Alarm.”
6. Click **Accept Changes** at the bottom of your screen to temporarily save your settings. You may now navigate to another screen; however, if you close the web interface before the next step, you will lose your changes.
7. Click **Save Settings** in the navigation bar to the left of your screen. Your Room Alert

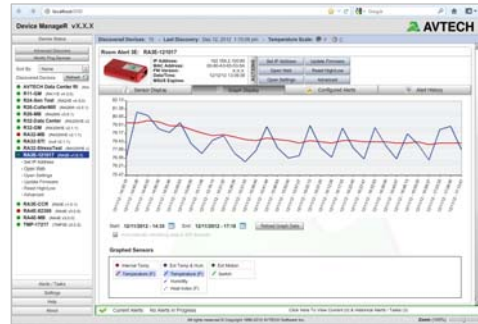
Smoke Sensor w/Escape Light (RMA-SS1-SEN)

will automatically reboot and commit your changes.

With AVTECH's Device Manager Software For Advanced Functionality

For advanced functionality and easy management of multiple units, configure your sensor with AVTECH's Device Manager, the software that comes FREE with the purchase of any Room Alert monitor.

You may download the current version from your customer account at AVTECH.com/Downloads while your Maintenance, Support & Update Service (MSUS) is current. If your service and access has lapsed, please contact your Product Specialist about reactivating them.



Smoke Sensor Features & Specifications

Environment Condition Monitored	Smoke
Type Of Sensor	Switch
Normal State	Open (= smoke alarm NOT triggered)
Power Supply	9V alkaline battery
Included	Yes
Sensor Cable Type	Low-voltage two-wire speaker cable
Included	Yes
Length	25'
Maximum Extendible Length	900'
Compatible Products	Any Room Alert model or Wireless Sensor Hub

AVT-130912.01