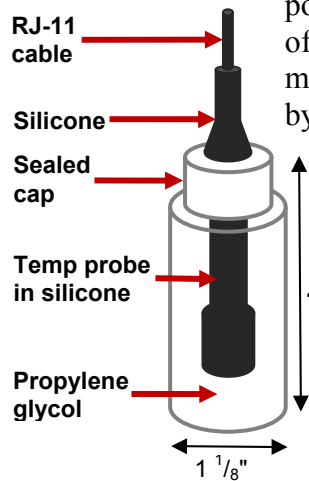




Digital Fluid Temperature Sensor (TMP-DFT-SEN) Installation Note

AVTECH's Digital Fluid Temperature Sensor monitors the temperature of fluids in refrigerated and other environments using a unique sensor housing. The temperature sensor is sealed in a tube filled with propylene glycol, a non-conductive clear liquid with a low freezing/high boiling point. The sensor returns the readings of the propylene glycol so that you may measure the consistent temperature held by the fluid rather than the ups and downs of the air moving around it.



With an operating range of -40° to 185° Fahrenheit (-40° to 85° Celsius), this "Plug and Play" sensor provides temperature values accurate to +/- 0.125 degrees every 2 seconds to your Room Alert or TemPageR monitor.



Digital Fluid Temperature Sensor Package Contents

- One (1) Digital Fluid Temperature Sensor with built-in 25' RJ-11 cable
- One (1) Installation Note (You're reading it now.)

Install Your Digital Fluid Temperature Sensor



Do not use this sensor in hazardous (classified) locations or life safety applications.

1. Locate the sensor where you wish to measure temperature. Shown here is a Digital Fluid Temperature Sensor placed in a freezer.
2. If necessary to hold the sensor in place, mount it with a cable clip, Velcro or nylon tie.



3. Run the built-in 25' cable back to your Room Alert, TemPageR or Wireless Sensor Hub. Try to avoid running it near large electromagnetic devices or fluorescent lights, which produce EMI that can interfere with sensor readings.



4. Plug the RJ-11 jack into an RJ-11 port on your Room Alert, TemPageR or Wireless Sensor Hub.

Digital Fluid Temperature Sensor (RMA-DFT-SEN)

RJ-11 Extension Cable & Coupler (ECC-25E-SEN)

You may extend the digital sensor up to 100' away from your Room Alert, TemPageR or Wireless Sensor Hub. AVTECH stocks the 25' RJ-11 Extension Cable & Coupler (ECC-25E-SEN) for this purpose. Please contact your Product Specialist to purchase this extension cable.

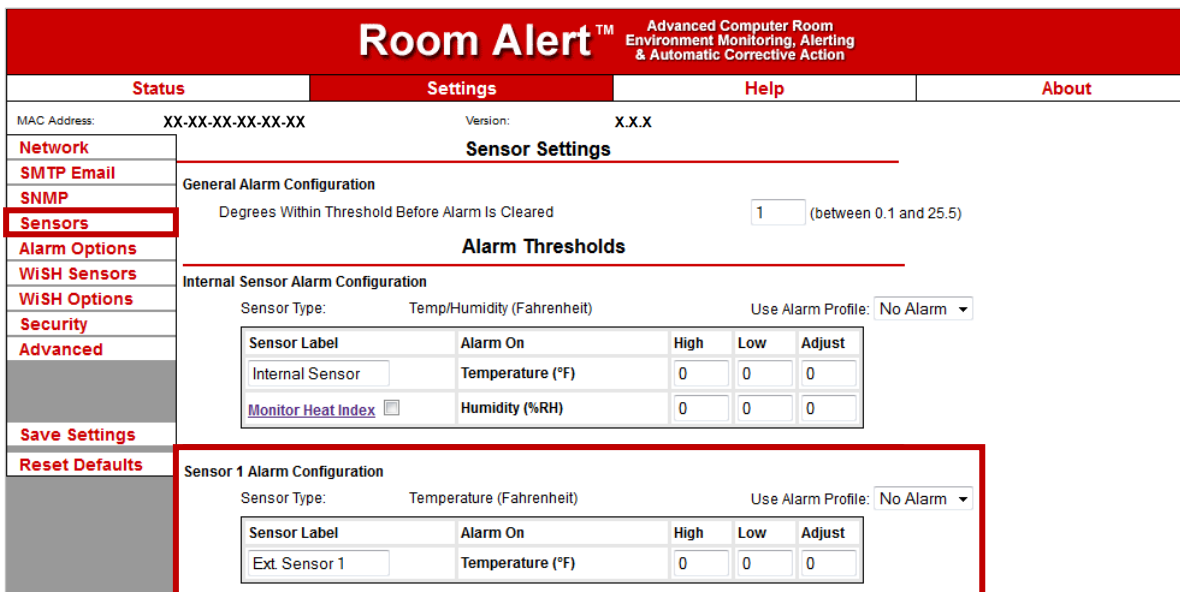


RJ-11 Extension Cable & Coupler
ECC-25E-SEN

Configure Your Digital Fluid Temperature Sensor

With Room Alert's Built-In Web Interface

Navigate to **Settings** → **Sensors** in the web interface of your Room Alert or TemPageR. The options you see below will vary depending on the model.



Room Alert™ Advanced Computer Room Environment Monitoring, Alerting & Automatic Corrective Action

Status Settings Help About

MAC Address: XX-XX-XX-XX-XX-XX Version: X.X.X

Sensors

Sensor Settings

General Alarm Configuration

Degrees Within Threshold Before Alarm Is Cleared: 1 (between 0.1 and 25.5)

Alarm Thresholds

Internal Sensor Alarm Configuration

Sensor Type: Temp/Humidity (Fahrenheit) Use Alarm Profile: No Alarm

Sensor Label	Alarm On	High	Low	Adjust
Internal Sensor	Temperature (°F)	0	0	0
<input type="checkbox"/> Monitor Heat Index	Humidity (%RH)	0	0	0

Sensor 1 Alarm Configuration

Sensor Type: Temperature (Fahrenheit) Use Alarm Profile: No Alarm

Sensor Label	Alarm On	High	Low	Adjust
Ext. Sensor 1	Temperature (°F)	0	0	0

1. Scroll down to your external digital sensor(s), the total number of which will vary depending on the Room Alert or TemPageR model.
2. Find the digital sensor interface that matches the port you connected your Digital Temperature Sensor to. Notice that your Room Alert or TemPageR monitor automatically detects the type of digital sensor and displays it in “Sensor Type.”
3. In “Sensor Label,” you may leave the default “Ext Sensor 1” or enter a descriptive name of up to 15 alphanumeric characters, such as “Temp Refrig 14” or “Cooler Temp.”
4. “Alarm On” automatically populates with the default temperature scale. Please refer to your Room Alert or TemPageR *User's Guide & Reference Manual* to change it.

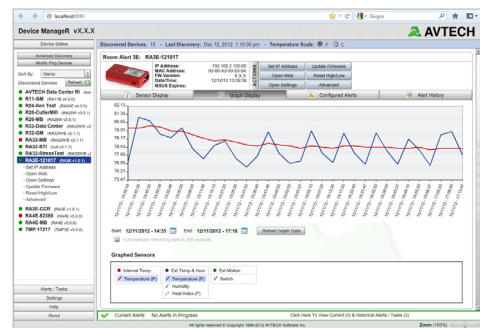
Digital Fluid Temperature Sensor (RMA-DFT-SEN)

5. In “High” and “Low,” you may leave the default, 0, or enter values for high and low thresholds. Your monitor generates alerts based on those thresholds.
6. In “Adjust,” you may enter a value to increase or decrease the temperature value if the reading your sensor provides differs slightly from a known value or source.
7. For models with the “Use Alarm Profile” feature: if you have configured Alarm Profiles in the Alarm Options screen, you may choose a profile from the drop-down menu. The default is “Profile 1.”
8. Click **Accept Changes** at the bottom of your screen to temporarily save your settings. You may now navigate to another screen; however, if you close the web interface before the next step, you will lose your changes.
9. Click **Save Settings** in the navigation bar to the left of your screen. Your Room Alert will automatically reboot and commit your changes.

With AVTECH’s Device Manager Software For Advanced Functionality

For advanced functionality and easy management of multiple units, configure your sensor with AVTECH’s Device Manager, the software that comes FREE with the purchase of any Room Alert monitor.

You may download the current version from your customer account at AVTECH.com/Downloads while your Maintenance, Support & Update Service (MSUS) is current. If your service and access has lapsed, please contact your Product Specialist about reactivating them.



Digital Fluid Temperature Sensor Features & Specifications

Environment Condition Monitored	Fluid temperature
Type Of Sensor	Digital
Power Supply	Monitoring unit
Sensor Cable Type	RJ-11 (standard straight-through telephone cord)
Included	Yes (built-in)
Length	25'
Maximum Extendible Length	100'
Temperature Range	-40° to 185° F (-40° to 85° C)
Accuracy	+/- 0.125 degrees
Sampling Rate	Every 2 seconds
Compatible Products	Any Room Alert, TemPageR or Wireless Sensor Hub

AVT-140127.01