

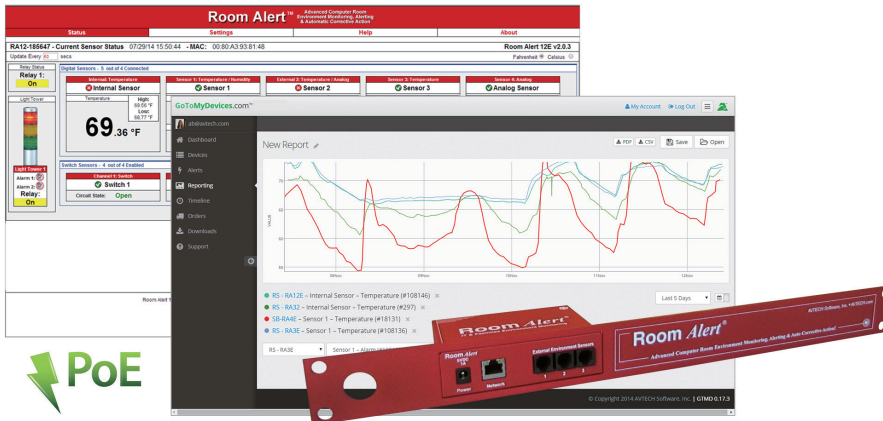
Room Alert® 12E

*“Advanced Physical Environment Monitoring,
Alerting & Automatic Corrective Action.”*

Order Now For...

CALL

Room Alert 12E (Standard) RA12E-TH1-WAS
Room Alert 12ER (Rack) RA12E-TH1-RAS



Advanced Features, Midrange Capacity & Midrange Price

- Easy Ethernet ‘Plug & Play’ setup for immediate IT & facilities environment monitoring.
- Includes built-in sensors for digital temperature, Device Manager software, and “PUSH” technology.
- Includes Power Over Ethernet (PoE), an external Digital Temperature Sensor and external Power Sensor.
- Includes ports for 3 digital sensors and 4 switch sensors or dry contacts, as well as additional ports to connect a 0-5V analog sensor, low voltage relay, and Light Tower & Relay Adapter (LTA).
- Offers advanced alerting by email, email-to-SMS, SNMP, webpage update and more.
- Use Room Alert 12E’s built-in web server, Device Manager software (included) GoToMyDevices (included) cloud service, or SNMP to monitor across your network.
- The Room Alert 12E package allows real-time sensor status, data logging, graphing, advanced alerting, Fahrenheit/Celsius, high/low watermarks and much more.
- Use Room Alert 12E with or without a host system. That’s right... No PC Required! This saves money, improves reliability and provides users with options. Install in minutes today, enjoy ‘Peace Of Mind’ tonight!

5 Steps To Prevent EM Disaster
1) Install Monitors for Immediate Detection
2) Auto Alerting to Responsible IT Staff
3) Auto Shutdown & Action Procedures
4) Fast & Appropriate Response by Staff
5) Review/Analyze/Plan Future Prevention

Manufacturer: AVTECH Software, Inc.

AVT-150819.08

INCLUDES: Room Alert 12E monitor, built-in Digital Temperature Sensor, external Digital Temperature Sensor, external Power Sensor, 3 Digital Sensor Ports (RJ-11), 4 Switch Sensor Channels, Factory Reset Button, Power Over Ethernet (PoE), PUSH technology, Ethernet Connection (RJ-45), Light Tower & Relay Adapter Connection Port, Relay Output Port (0.3A@125VAC / 1A@24VDC), 0-5V Analog Sensor Input Port, 10' Ethernet cable, 5V 1A Power Adapter (110/240V, RoHS), built-in web server, SNMP Trap & Query enabled, SNMP MIB, bundled Device Manager software license, downloadable *Room Alert 12E User's Guide & Reference Manual*, 1 year Personal subscription to GoToMyDevices, '30-Day Satisfaction Guarantee'. Optional rack mount bracket, sensors, Light Tower & Relay Adapter (LTA), voice or GSM modem & software plugin packages available.