

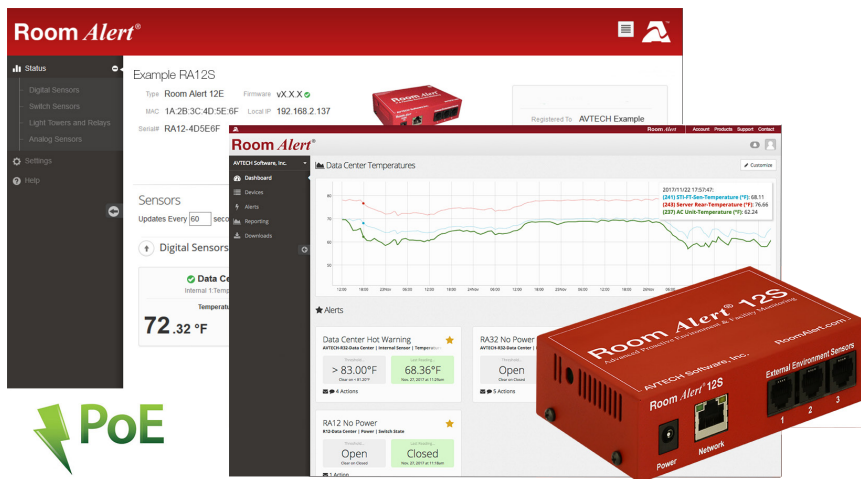
Room Alert® 12S

*“Advanced Physical Environment Monitoring,
Alerting & Automatic Corrective Action.”*

Order Now For...

CALL

Room Alert 12S (Standard) RA12S-DAP-WAS
Room Alert 12SR (Rack) RA12S-DAP-RAS



Advanced Security, Midrange Capacity & Midrange Price

- Secure data transfer options include HTTPS / SSL Web Interface, SSL / TLS Email Support, SNMP v1/v2c/v3, 2048-bit encryption and SSL Push to Room Alert Account.
- Easy Ethernet ‘Plug & Play’ setup for immediate IT & facilities environment monitoring.
- Includes a built-in sensor for digital temperature and “PUSH” technology.
- Includes Power over Ethernet (PoE) and external Digital Active Power w/Temperature Sensor.
- Includes ports for 3 digital sensors and 4 switch sensors or dry contacts, as well as additional ports to connect 0-5V analog sensor, low voltage relay, and Light Tower & Relay Adapter (LTA).
- Offers advanced alerting by email, email-to-SMS, SNMP, webpage update and more.
- Use Room Alert 12S’s built-in web server, RoomAlert.com Account (included), local Room Alert management software (included), or SNMP to monitor across your network.
- The Room Alert 12S package allows real-time sensor status, data logging, graphing, advanced alerting, Fahrenheit/Celsius, high/low watermarks and much more.

5 Steps To Prevent EM Disaster

- 1) Install Monitors for Immediate Detection
- 2) Auto Alerting to Responsible IT Staff
- 3) Auto Shutdown & Action Procedures
- 4) Fast & Appropriate Response by Staff
- 5) Review/Analyze/Plan Future Prevention

Manufacturer: AVTECH Software, Inc.

AVT-200618.03

INCLUDES: Room Alert 12S monitor, built-in Digital Temperature Sensor, external Digital Active Power w/Temperature Sensor, 3 Digital Sensor Ports (RJ-11), 4 Switch Sensor Channels, Factory Reset Button, Power Over Ethernet (PoE), PUSH technology, Ethernet Connection (RJ-45), Light Tower & Relay Adapter (LTA) Port, Relay Output Port (0.3A@125VAC / 1A@24VDC), 0-5V Analog Sensor Input Port, 10' (3.1.) Ethernet cable, 5V 1A Power Adapter (110/240V, RoHS), built-in web server, SNMP Trap & Query enabled, SNMP MIB, bundled local Room Alert management software, downloadable *Room Alert User's Guide & Reference Manual*, 1 year RoomAlert.com Professional Account upgrade, lifetime support, lifetime firmware updates, '30-Day Satisfaction Guarantee'. Optional rack mount bracket, sensors, Light Tower & Relay Adapter (LTA), GSM modem & RoomAlert.com upgrade options available.