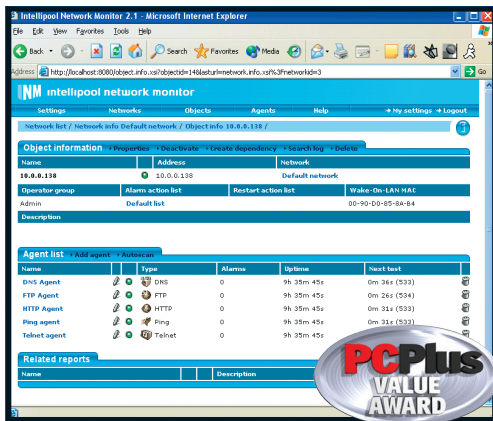


NETWORK MONITOR

Intellipool Network Monitor 2.1



INM scans the local network for machines, detects services and monitors every minute.

full support for monitoring various protocols. Rather than try to use a catch-all monitor, INM has individual monitoring agents for each type of protocol, all brought together under one interface. This does, of course,

Back when servers only ran Telnet, email and FTP, administration was a lot easier – you could check the CPU load with a few simple commands, and that would be enough to know the system was in good working order. Nowadays, an average machine hosts at least ten services, routinely split across a network, with advanced mirroring and failover solutions in place. Network monitoring has never been more convoluted.

Intellipool Network Monitor (INM) aims to solve this problem by providing

mean that it only supports a set number of protocols, but all the favourites are covered – IMAP, FTP, ODBC, HTTP, SSH, NNTP and more.

In order to verify that each of the protocols are working, it performs a simple request, such as requesting a file through HTTP, which means there's no chance of the port appearing open while the server behind it has crashed. The monitoring interface is entirely run over HTTP, which means you can easily view it wherever you want, using whatever device you have to hand.

What's particularly clever, is the way INM discovers the available networks. Although you can configure it by hand, the simplest way is to allow it to run a network-wide port scan. In Autoscan mode, it checks the entire local network for machines; when it finds machines, it checks each of them to see what services are running. All the information is added to the database and monitoring commences. The tests run once every minute, but you can configure this to any time you want.

Beyond auto-detection, setting up the server isn't easy – there were quite a few HTML forms that were overly long, and the help provided wasn't up to par. The attempt at a configuration wizard was a nice try, but it isn't well thought-out. Plus, in order to keep the interface dynamic, INM has the whole thing refresh every 20 seconds. While this is probably fine most of the time, occasionally you'll find that it refreshes while you're halfway through selecting from the menus. These are minor niggles, though, which don't detract much from the overall high quality of the software, making it well worth evaluating at this excellent price.

Paul Hudson

INFORMATION

PRICE £138 (£117 ex VAT)

SUPPLIER Zen Software
0845 058 9058

INFO www.zensoftware.co.uk

REQUIREMENTS

CPU 800MHz Pentium III

RAM 128MB

OS Windows 2000, XP

PCPlus ratings

INTELLIPOOL NETWORK MONITOR 2.1

Value ●●●●●●●●●●

Features ●●●●●●●●●●

Performance ●●●●●●●●●●

OVERALL **8**