

# Ipswitch WhatsUp Gold

## Know Your Network.

WhatsUp® Gold delivers comprehensive and easy to use application and network monitoring that allows IT managers to turn network data into actionable business information. By proactively monitoring all critical network devices and services, WhatsUp Gold reduces costly and frustrating downtime that can impact business. With an all-new Web-based interface, WhatsUp Gold lets you take control of your network infrastructure and applications for the important strategic work that drives results. In a marketplace overwhelmed with complexity, WhatsUp Gold provides simple deployment, robust scalability, groundbreaking usability and fast return on investment.

## Ipswitch WhatsUp Gold

WhatsUp Gold isolates network problems and provides awareness and understanding of network performance and availability. WhatsUp Gold:

- discovers and maps all your network devices
- notifies you when problems happen on the network
- gathers network information over time and generates reports
- provides anytime, anywhere network monitoring

In addition, WhatsUp Gold delivers all the tools you need to monitor and manage your network, including:

### Dynamic Network Discovery and Mapping

Discover your network in minutes using intuitive wizards to scan for routers, switches, servers, printers and other networked devices. All network information is stored in a relational database to enable easy device management and reporting.

- Dynamic Groups let you group devices by specified characteristics; for example, all devices that are currently down, or all devices of a particular type.
- Discover and map MAC addresses to IP addresses to show connectivity between a particular switch's ports and devices, allowing assets to be located.

### Fast Problem Resolution

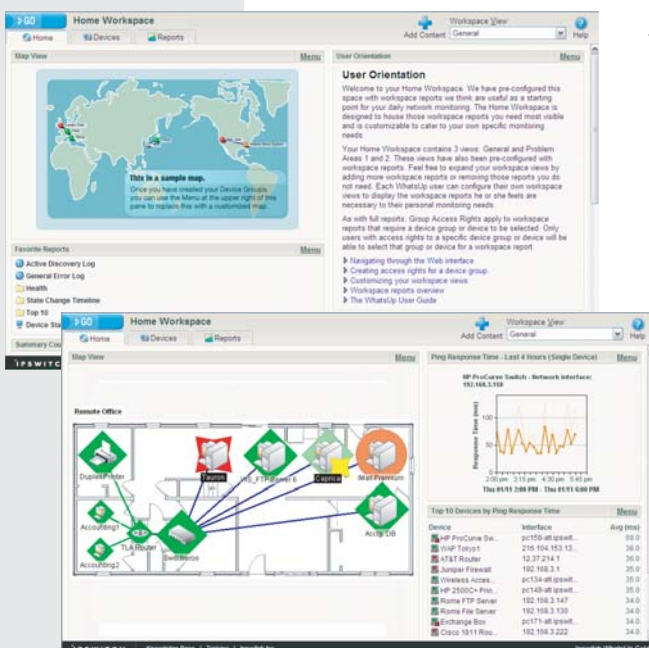
Track network failures and send alerts when problems occur, or restart a stopped service or launch a program automatically. WhatsUp Gold can:

- send alerts via email, pager, cell phone, SMS, audio, and System task tray alerts
- forward SNMP traps
- restart business-critical application services

### Comprehensive SNMP and WMI Network Monitoring and Reporting

Track the availability and performance of critical business systems. WhatsUp Gold offers real-time monitoring of network services, Windows NT Services, Event Log and syslog events and system resource utilization. It is also capable of monitoring octets to identify spikes and bandwidth issues and to determine HTTPS page availability.

*Use customizable Workspaces and the color-coded Map view to see the status of monitored applications and devices at a glance*



## Choose the Right WhatsUp Gold v11 Product for Your Needs

Category	Feature	WhatsUp Gold Premium Edition	WhatsUp Gold Standard Edition
<b>Application Monitoring</b>	Predefined System Performance Reports using WMI Counters	✓	✓
	Custom Performance Monitors & Reports using any WMI Counter	✓	
	Application Monitoring Templates for SQL Server & Exchange®	✓	
<b>Powerful Monitoring Device</b>	Full SNMP v1/2/3 Monitoring for any SNMP-manageable device	✓	✓
	Add MIBs with simple Drag-and-Drop	✓	✓
	Custom scripted monitors or actions (VBScript/JavaScript)	✓	✓
	Web Content Monitoring (HTTPS/HTTP)	✓	✓
	Router bandwidth monitoring & trend analysis	✓	✓
	Support for non-persistent SNMP instances for Performance Monitors <b>NEW</b>	✓	✓
	Improvements to Map, Bulk Field Changes, Dependancies and Database Performance <b>NEW</b>	✓	✓
	Customizable interface speed for Interface Utilization reporting <b>NEW</b>	✓	✓
<b>Integrated Reporting</b>	Extensive library of predefined reports	✓	✓
	Asset management /MAC Address finder report	✓	✓
	Configurable Workspaces with 100+ Reports <b>NEW</b>	✓	✓
<b>Standards Compliance</b>	SNMPv1/2/3 support	✓	✓
	Expanded IPv6 capabilities <b>NEW</b>	✓	✓
<b>Flexible Control</b>	Credentials library	✓	✓
	Dynamic, virtual groups	✓	✓
	Integrated suite of WhatsUp database tools	✓	✓
	Full control of network views through Web portal interface <b>NEW</b>	✓	✓
	Web Server and Polling Engine run as separate services <b>NEW</b>	✓	✓

**WMI -  
The Preferred Solution  
for Windows Networks**

In addition to using SNMP v1/2/3 for monitoring and reporting, WhatsUp also uses Microsoft®'s Windows® Management Instrumentation (WMI) to gather real-time and historical information about the Windows devices on your network.

WMI is a Microsoft Windows standard for retrieving information from computer systems running Windows. WMI comes installed by default on Windows 2000, 2003 and XP systems.

**Performance Monitoring and Reporting**

Performance monitors in WhatsUp Gold gather important information about the devices running on your network, then use those data to create reports trending the utilization and availability of different aspects of those devices. Performance monitors are configured in the Performance Monitor Library, and added to individual devices. You can create global WMI and SNMP monitors in the library, or create device-specific monitors in Device Properties.

WhatsUp Gold is installed with five performance monitors that monitor specific types of data on your network devices:

- CPU Utilization
- Memory Utilization
- Disk Utilization
- Ping Latency and Availability
- Interface/Bandwidth Utilization

You can also create custom monitors for any WMI or SNMP performance counter. Once you have configured a performance monitor, you can generate a performance reports to see the results of the performance polling attempts. These reports can be used to troubleshoot your network problems.

Detailed technical information is available from the WhatsUp Support Center at:

[www.ipswitch.com/support/whatsup](http://www.ipswitch.com/support/whatsup)

System and hardware requirements are available at:

[visit.ipswitch.com/wugsysreqs](http://visit.ipswitch.com/wugsysreqs).

Date	Device - Monitor	State	Duration	Message
Thursday, January 11, 2007 05:05	ANHARTMARI - Ping	Down at least 2 min	1 Minute	Request timed out
Thursday, January 11, 2007 05:03	ANHARTMARI - Ping	Down	2 Minutes	Request timed out
Thursday, January 11, 2007 04:46	Perseus - Ping	Maintenance	19 Minutes	Manually placed into maintain...
Thursday, January 11, 2007 04:39	LGH Mail - SMTP	Down at least 20 min	27 Minutes	An existing connection was for
Thursday, January 11, 2007 04:24	LGH Mail - SMTP	Down at least 2 min	15 Minutes	An existing connection was for
Thursday, January 11, 2007 04:22	LGH Mail - SMTP	Down at least 2 min	2 Minutes	An existing connection was for
Thursday, January 11, 2007 04:19	LGH Mail - SMTP	Down	2 Minutes	An existing connection was for
Thursday, January 11, 2007 04:05	ADOVLRIG - Ping	Down at least 20 min	1 Hour	Request timed out
Thursday, January 11, 2007 03:55	Rome FTP Server - Ping	Up at least 5 min	1 Hour 10 Minutes	Up
Thursday, January 11, 2007 03:51	Rome FTP Server - Ping	Up	4 Minutes	
Thursday, January 11, 2007 03:50	ADOVLRIG - Ping	Down at least 5 min	15 Minutes	Request timed out
Thursday, January 11, 2007 03:48	Rome FTP Server - Ping	Down at least 2 min	2 Minutes	Request timed out
Thursday, January 11, 2007 03:47	ADOVLRIG - Ping	Down at least 2 min	3 Minutes	Request timed out
Thursday, January 11, 2007 03:46	ADOVLRIG - Ping	Down	1 Minute	Request timed out
Thursday, January 11, 2007 03:45	Rome FTP Server - Ping	Down at least 2 min	3 Minutes	Request timed out
Thursday, January 11, 2007 03:44	Rome FTP Server - Ping	Down	1 Minute	Request timed out

WhatsUp's built-in reports give you the information you need to monitor critical components of your network

10 Maguire Road  
Lexington, MA 02421  
(781) 676-5700

Zekeringstraat 17  
1014 BM, Amsterdam  
The Netherlands